

# CREATIVE CLASSIC FOODS INC

A Great Spin On Taste

**A NEW SPIN ON CLASSIC FAVORITES**

CULINARY CREATORS \* MANUFACTURER OF PROPRIETARY BRANDS \* CATAGORY LEADER



OFFICE : 3A NORTH PARK AVENUE, ROCKVILLE CENTRE, NY 11570 \*516-255-1999 TEL

516-255-1779 FAX \* [WWW.CCFOODSINC.COM](http://WWW.CCFOODSINC.COM) \* SALES @ccfoodsinc.com



*\* A Creative Alternative  
to a Classic  
Dish !*

**emplantnada®**

*The Original Plant-based Empanada  
Beef - Chicken - Pork - Chorizo*



*Another Creative Classic Original !*



**CREATIVE CLASSIC FOODS INC**

*A Great Spin On Taste*

*Tel: 516 - 255-1999*

*Offices - 3A North Park Avenue  
Rockville Center, N.Y. 11570*

# REPACK LABELS

**Heating Instructions** | OVEN- preheat oven to 325° & heat for 10 minutes or to 165°  
MICROWAVE- 1 minute on high or to 165°

**Nutrition Facts** varies servings per container **Serv. size: 3.8oz (107g)**

Amount per serving: **Calories 100, Total Fat 9g (12% DV), Sat. Fat 1g (5% DV), Trans Fat 0g, Cholest. 0mg (0% DV), Sodium 140mg (6% DV), Total Carb. 9g (3% DV), Dietary Fiber 2g (7% DV), Total Sugars 1g, Includes 0g Added Sugars (0% DV), Protein 5g, Vit. D 0mcg (0% DV), Calcium 33mg (2% DV), Iron 0mg (0% DV), Potassium 53mg (2% DV).**

Ingredients: Dough (Enriched Bleached Wheat Flour [Wheat Flour, Malted Barley Flour, Niacin, Reduced Iron, Thiamine Mononitrate, Riboflavin, Folic Acid], Water, Vegetable Shortening [Unrefined Soybean Oil And/Or Palm Oil], Salt, Acetic Acid, Cultured Wheat Flour, Naturally Fermented Lactic Acid & Enzymes), Soy Crumbles (Water, Soy Flour, Expeller Pressed Canola Oil, Yeast Extract [Yeast Extract, Salt], White Distilled Vinegar, Sea Salt, Dried Onion, Xanthan Gum, Dried Garlic, Bell Pepper, Soybean Oil, Bread Crumbs [Bleached Wheat Flour, Sugar, Yeast, Salt, Onion, Carrots, Vegetable Stock (Carrot, Celery, Onion, Salt), Natural Flavors, Turmeric, Sodium Inosinate And Disodium Guanylate], Seasoning (Monosodium Glutamate, Salt, Garlic Powder, Onion Powder, Spices, Spice Extract, Natural Color, Trisodium Phosphate [Not Color Agent]), **CONTAINS: WHEAT, SOY**

sales@orchard2barn.com • © Copyright 2020 Orchard2Barn Inc. **4oz (113.4g)**

**Heating Instructions** | OVEN- preheat oven to 325° & heat for 10 minutes or to 165°  
MICROWAVE- 1 minute on high or to 165°

**Nutrition Facts** varies servings per container **Serv. size: 3.8oz (107g)**

Amount per serving: **Calories 140, Total Fat 12g (15% DV), Sat. Fat 3g (15% DV), Trans Fat 0g, Cholest. 0mg (0% DV), Sodium 80mg (3% DV), Total Carb. 10g (4% DV), Dietary Fiber 3g (11% DV), Total Sugars 1g, Includes 0g Added Sugars (0% DV), Protein 6g, Vit. D 0mcg (0% DV), Calcium 53mg (4% DV), Iron 2mg (10% DV), Potassium 70mg (2% DV).**

Ingredients: Dough (Enriched Bleached Wheat Flour [Wheat Flour, Malted Barley Flour, Niacin, Reduced Iron, Thiamine Mononitrate, Riboflavin, Folic Acid], Water, Vegetable Shortening [Unrefined Soybean Oil And/Or Palm Oil], Salt, Acetic Acid, Cultured Wheat Flour, Naturally Fermented Lactic Acid & Enzymes), Soy Crumbles (Water, Soy Flour, Expeller Pressed Canola Oil, Yeast Extract [Yeast Extract, Salt], White Distilled Vinegar, Sea Salt, Dried Onion, Xanthan Gum, Dried Garlic, Bell Pepper, Soybean Oil, Bread Crumbs [Bleached Wheat Flour, Sugar, Yeast, Salt, Onion, Carrots, Vegetable Stock (Carrot, Celery, Onion, Salt), Natural Flavors, Turmeric, Sodium Inosinate And Disodium Guanylate], Seasoning (Monosodium Glutamate, Salt, Garlic Powder, Onion Powder, Spices, Spice Extract, Natural Color, Trisodium Phosphate [Not Color Agent]), **CONTAINS: WHEAT, SOY**

sales@orchard2barn.com • © Copyright 2019 Orchard2Barn Inc. **4oz (113.4g)**

**Heating Instructions** | OVEN- preheat oven to 325° & heat for 10 minutes or to 165°  
MICROWAVE- 1 minute on high or to 165°

**Nutrition Facts** varies servings per container **Serv. size: 3.8oz (107g)**

Amount per serving: **Calories 110, Total Fat 8g (10% DV), Sat. Fat 1g (5% DV), Trans Fat 0g, Cholest. 0mg (0% DV), Sodium 220mg (10% DV), Total Carb. 13g (5% DV), Dietary Fiber 1g (4% DV), Total Sugars 5g, Includes 1g Added Sugars (2% DV), Protein 4g, Vit. D 0mcg (0% DV), Calcium 6mg (0% DV), Iron 0mg (0% DV), Potassium 59mg (2% DV).**

Ingredients: Dough (Enriched Bleached Wheat Flour [Wheat Flour, Malted Barley Flour, Niacin, Reduced Iron, Thiamine Mononitrate, Riboflavin, Folic Acid], Water, Vegetable Shortening [Unrefined Soybean Oil And/Or Palm Oil], Salt, Acetic Acid, Cultured Wheat Flour, Naturally Fermented Lactic Acid & Enzymes), Soy Crumbles (Water, Structured Vegetable Protein [Soy Flour, Isolated Soy Protein, Tapioca Starch], Brown Sugar, White Distilled Vinegar, Expeller Pressed Canola Oil, Turbine Powder, Sea Salt, Yeast Extract [Yeast Extract, Natural Flavors], Salt, Dried Garlic, Dried Onion, Celery, Natural Liquid Smoke Flavor, Xanthan Gum, Cayenne Chile Powder, Ground Cloves, Bell Pepper, Soybean Oil, Bread Crumbs [Bleached Wheat Flour, Sugar, Yeast, Salt, Onion, Carrots, Sweet Potato (Sweet Potato, Water, Corn Syrup, Sugar, Calcium Chloride), Sweet Soy Glaze (High Fructose Corn Syrup, Soy Sauce [Water, Soybeans, Wheat, Salt, Alcohol], Modified Corn Starch, Water, Calcium Chloride, Less Than 1% Potassium Sorbate, Sodium Benzoate As Preservative), **CONTAINS: WHEAT, SOY**

sales@orchard2barn.com • © Copyright 2019 Orchard2Barn Inc. **4oz (113.4g)**

**Heating Instructions** | OVEN- preheat oven to 325° & heat for 10 minutes or to 165°  
MICROWAVE- 1 minute on high or to 165°

**Nutrition Facts** varies servings per container **Serv. size: 3.8oz (107g)**

Amount per serving: **Calories 80, Total Fat 8g (10% DV), Sat. Fat 1g (5% DV), Trans Fat 0g, Cholest. 0mg (0% DV), Sodium 70mg (3% DV), Total Carb. 9g (3% DV), Dietary Fiber 2g (7% DV), Total Sugars 2g, Includes 0g Added Sugars (0% DV), Protein 3g, Vit. D 0mcg (0% DV), Calcium 23mg (2% DV), Iron 1mg (6% DV), Potassium 60mg (2% DV).**

Ingredients: Dough (Enriched Bleached Wheat Flour [Wheat Flour, Malted Barley Flour, Niacin, Reduced Iron, Thiamine Mononitrate, Riboflavin, Folic Acid], Water, Vegetable Shortening [Unrefined Soybean Oil And/Or Palm Oil], Salt, Acetic Acid, Cultured Wheat Flour, Naturally Fermented Lactic Acid & Enzymes), Soy Crumble (Water, Soy Flour, Expeller Pressed Canola Oil, Spice Blend [Dried Pepper, Red Pepper, Garlic, Rice Concentrate, Rosemary Extract], Soy Protein Concentrate, White Distilled Vinegar, Sea Salt, Xanthan Gum, Cayenne Pepper, Disodium), Bell Pepper, Soybean Oil, Bread Crumbs [Bleached Wheat Flour, Sugar, Yeast, Salt, Onion, Carrots, Jalapeno Pepper, **CONTAINS: WHEAT, SOY**

sales@orchard2barn.com • © Copyright 2019 Orchard2Barn Inc. **4oz (113.4g)**

Counter P.O.S. Sign



emplantnada®



*The Original Plant-based Empanada*



*Beef • Chicken • Pork • Chorizo*

***Ready to Heat & Serve***

• *Easy & Healthy* •

*Grab & Go - Quick Snack - Center of the Plate*

***Promotes a***

*Healthy Planet • Sustainability • Good Health*

**YOUR  
LOGO  
HERE**

Beef  
10/28/2019



<b>Nutrition Facts</b>	
servings per container	
<b>Serving size</b>	<b>(107g)</b>
<b>Amount per serving</b>	
<b>Calories</b>	<b>140</b>
	<b>% Daily Value*</b>
<b>Total Fat</b> 12g	<b>15%</b>
Saturated Fat 3g	<b>15%</b>
Trans Fat 0g	
<b>Cholesterol</b> 0mg	<b>0%</b>
<b>Sodium</b> 80mg	<b>3%</b>
<b>Total Carbohydrate</b> 10g	<b>4%</b>
Dietary Fiber 3g	<b>11%</b>
Total Sugars 1g	
Includes 0g Added Sugars	<b>0%</b>
<b>Protein</b> 6g	
<b>Vitamin D</b> 0mcg	<b>0%</b>
<b>Calcium</b> 53mg	<b>4%</b>
<b>Iron</b> 2mg	<b>10%</b>
<b>Potassium</b> 70mg	<b>2%</b>
*The % Daily Value tells you how much a nutrient in a serving of food contributes to a daily diet. 2,000 calories a day is used for general nutrition advice.	

**INGREDIENTS:** Dough (Enriched Bleached Wheat Flour [Wheat Flour, Malted Barley Flour, Niacin, Reduced Iron, Thiamine Mononitrate, Riboflavin, Folic Acid], Water, Vegetable Shortening [Interesterified Soybean Oil And/Or Palm Oil, Salt, Ascorbic Acid, Cultured Wheat Flour, Naturally Fermented Lactic Acid & Enzymes]), Soy Crumbles (Water, Soy Protein Concentrate, Expreller Pressed Canola Oil, Refined Coconut Oil, Isolated Soy Protein, Soy Flour, Yeast Extract [Yeast Extract, Natural Flavors, Salt], Methycellulose, Caramel Color, Natural Flavor [Yeast Extract, Maltodextrin, Salt, Natural Flavors, Medium Chain Triglycerides, Acetic Acid, Grill Flavor [From Sunflower Oil, Smoke Flavor], Beet Powder [Beet Juice, Maltodextrin, Citric Acid], Natural Red Color [Beet Juice, Annatto, Glycerin], Citric Acid), Bell Pepper, Soybean Oil, Bread Crumbs (Bleached Wheat Flour, Sugar, Yeast Salt), Onion, Carrots, Chicken Base (Maltodextrin (From Corn), Salt, Dextrose, Rendered Chicken Fat, Corn Starch, Onion Powder, Monosodium Glutamate, Chicken Flavor (Contains Chicken Broth, Yeast Extract, Chicken Fat), Natural Flavors, Turmeric, Disodium Inosinate And Disodium Guanytate), Cumin, Garlic Powder, Seasoning (Monosodium Glutimate, Salt, Garlic Powder, Onion Powder, Spices, Spice Extract, Natural Color, Tricalcium Phosphate [Anti Caking Agent])).

Contains Soy, Wheat.

# CHICKEN FLAVOR



## Nutrition Facts

varies servings per container

Serving size **3.8oz(107g)**

Amount per serving

**Calories 100**

% Daily Value\*

**Total Fat 9g 12%**

Saturated Fat 1g 5%

Trans Fat 0g

**Cholesterol 0mg 0%**

**Sodium 110mg 5%**

**Total Carbohydrate 10g 4%**

Dietary Fiber 2g 7%

Total Sugars 1g

Includes 0g Added Sugars 0%

**Protein 5g**

Vitamin D 0mcg 0%

Calcium 34mg 2%

Iron 0mg 0%

Potassium 54mg 2%

\*The % Daily Value tells you how much a nutrient in a serving of food contributes to a daily diet. 2,000 calories a day is used for general nutrition advice.

INGREDIENTS: Dough (Enriched Bleached Wheat Flour [Wheat Flour, Malted Barley Flour, Niacin, Reduced Iron, Thiamine Mononitrite, Riboflavin, Folic Acid], Water, Vegetable Shortening [Interesterified Soybean Oil And/Or Palm Oil], Salt, Ascorbic Acid, Cultured Wheat Flour, Naturally Fermented Lactic Acid & Enzymes], Soy Crumbles (Water, Soy Flour, Expeller Pressed Canola Oil, Yeast Extract [Yeast Extract, Salt], White Distilled Vinegar, Sea Salt, Dried Onion, Xanthan Gum, Dried Garlic), Bell Pepper, Soybean Oil, Bread Crumbs (Bleached Wheat Flour, Sugar, Yeast, Salt), Onion, Carrots, Vegetable Broth [Water, Carrots, Celery, Onion, Salt, Spices], Natural Flavors, Turmeric, Disodium Inosinate And Disodium Guanylate), Seasoning (Monosodium Glutamate, Salt, Garlic Powder, Onion Powder, Spices, Spice Extract, Natural Color, Tricalcium Phosphate [Anti Caking Agent]).

Contains Soy, Wheat.

Chorizo  
10/28/2019



## Nutrition Facts

varies servings per container	
<b>Serving size</b>	<b>3.8oz(107g)</b>
<b>Amount per serving</b>	
<b>Calories</b>	<b>80</b>
<b>% Daily Value*</b>	
<b>Total Fat</b> 8g	<b>10%</b>
Saturated Fat 1g	<b>5%</b>
Trans Fat 0g	
<b>Cholesterol</b> 0mg	<b>0%</b>
<b>Sodium</b> 70mg	<b>3%</b>
<b>Total Carbohydrate</b> 9g	<b>3%</b>
Dietary Fiber 2g	<b>7%</b>
Total Sugars 2g	
Includes 0g Added Sugars	<b>0%</b>
<b>Protein</b> 3g	
<b>Vitamin D</b> 0mcg	<b>0%</b>
<b>Calcium</b> 23mg	<b>2%</b>
<b>Iron</b> 1mg	<b>6%</b>
<b>Potassium</b> 60mg	<b>2%</b>

\*The % Daily Value tells you how much a nutrient in a serving of food contributes to a daily diet. 2,000 calories a day is used for general nutrition advice.

**INGREDIENTS:** Dough (Enriched Bleached Wheat Flour [Wheat Flour, Malted Barley Flour, Niacin, Reduced Iron, Thiamine Mononitrate, Riboflavin, Folic Acid], Water, Vegetable Shortening [Interesterified Soybean Oil And/Or Palm Oil, Salt, Ascorbic Acid, Cultured Wheat Flour, Naturally Fermented Lactic Acid & Enzymes], Soy Crumble (Water, Soy Flour, Expeller Pressed Canola Oil, Spice Blend [Chili Pepper, Red Pepper, Garlic, Rice Concentrate, Rosemary Extract], Soy Protein Concentrate, White Distilled Vinegar, Sea Salt, Xanthan Gum, Cayenne Pepper, Oleoresin), Bell Pepper, Soybean Oil, Bread Crumbs (Bleached Wheat Flour, Sugar, Yeast, Salt), Onion, Carrots, Jalapeno Pepper.

Contains Soy, Wheat.

Pork  
10/28/2019



## Nutrition Facts

varies servings per container  
Serving size 3.8 oz(107g)

Amount per serving  
**Calories 110**

	% Daily Value*
<b>Total Fat</b> 8g	10%
Saturated Fat 1g	5%
Trans Fat 0g	
<b>Cholesterol</b> 0mg	0%
<b>Sodium</b> 220mg	10%
<b>Total Carbohydrate</b> 13g	5%
Dietary Fiber 1g	4%
Total Sugars 5g	
Includes 1g Added Sugars	2%
<b>Protein</b> 4g	
<b>Vitamin D</b> 0mcg	0%
<b>Calcium</b> 6mg	0%
<b>Iron</b> 0mg	0%
<b>Potassium</b> 59mg	2%

\*The % Daily Value tells you how much a nutrient in a serving of food contributes to a daily diet. 2,000 calories a day is used for general nutrition advice.

INGREDIENTS: Dough (Enriched Bleached Wheat Flour [Wheat Flour, Malted Barley Flour, Niacin, Reduced Iron, Thiamine Mononitrate, Riboflavin, Folic Acid], Water, Vegetable Shortening [Interesterified Soybean Oil And/Or Palm Oil, Salt, Ascorbic Acid, Cultured Wheat Flour, Naturally Fermented Lactic Acid & Enzymes], Soy Crumble (Water, Structured Vegetable Protein [Soy Flour, Isolated Soy Protein, Tapioca Starch], Brown Sugar, White Distilled Vinegar, Expeller Pressed Canola Oil, Tomato Paste, Sea Salt, Yeast Extract [Yeast Extract, Natural Flavoring, Salt], Dried Garlic, Dried Onion, Caramel Color, Natural Liquid Smoke Flavor, Xanthan Gum, Chipotle Chile Powder, Ground Cloves), Bell Pepper, Soybean Oil, Bread Crumbs (Bleached Wheat Flour, Sugar, Yeast Salt), Onion, Carrots, Sweet Potato (Sweet Potato, Water, Corn Syrup, Sugar, Calcium Chloride), Sweet Soy Glaze (High Fructose Corn Syrup, Soy Sauce [Water, Soybeans, Wheat, Salt, Alcohol], Modified Corn Starch, Water, Caramel Color, Less Than .01% Potassium Sorbate, Sodium Benzoate As Preservative).

Contains Soy, Wheat.





# Chicken Pot Pie

- Plant Based -

3A NORTH PARK AVE  
ROCKVILLE CENTRE, NY  
516-255-1999

## CHICKEN POT PIE PLANT BASED

INGREDIENTS: WATER, SOY FLOUR, EXPELLER PRESSED CANOLA OIL, YEAST EXTRACT (YEAST EXTRACT, SALT) WHITE DISTILLED VINEGAR, SEA SALT, DRIED ONION, XANTHAN GUM, DRIED GARLIC, PLANT BUTTER (PALM FRUIT, PALM KERNEL, AVOCADO OIL), PEA PROTEIN, SUNFLOWER LECITHIN, CITRIC ACID, VITAMIN PALMITATE, BETA CAROTENE, VEGETABLE STOCK (TOMATO PUREE, CARROT, ONION, CELERY) SEA SALT, CANE SUGAR, MOLASSES, POTATO FLOUR, GARLIC POWDER, MICROGARD (CULTURED DEXTROSE, MALTODEXTRIN) ENRICHED BLEACHED FLOUR (BLEACHED WHEAT BARLEY, FLOUR, NIACIN, IRON, THIAMINE MONONITRATE, RIBOFLAVIN, FOLIC ACID) DOUGH CONDITION (SODIUM STEAROYL LACTYLATE, CALCIUM SULFATE, L-CYSTEINE HYDROCHLORIDE)  
CONTAINS: WHEAT, SOY



CREATIVE CLASSIC FOODS INC  
A Great Spin On Taste

3a North Park avenue, RVC, NY 11570 - (516)255-0065



# BEEF STYLE BOLOGNESE SAUCE

- Plant Based -

Weight: 16 oz

## BEEF STYLE BOLOGNESE SAUCE - Plant Based -

INGREDIENTS: WATER, PEA PROTEIN ISOLATE, EXPELLER PRESSED CANOLA OIL, RICE FLOUR, MALASSES (FOR COLOR), YEAST EXTRACT, CONTAINS 0.5 % OR LESS: TAPIOCA MALTODEXTRIN, ACACIA GUM, SALT, SUNFLOWER OIL, NATURAL FLAVOR, CANOLA OIL, PLANT BASED BUTTER (PALM FRUIT, PALM KERNEL, AVOCADO OIL) VEGETABLE BROTH (CARROT, CELERY, ONION), TOMATO, TOMATO PASTE (ROMA TOMATO, CITRIC ACID) WATER, MICROGARD730 (CULTURED DEXTROS MALTODEGTRIN) ASSORTED SPICES  
CONTAINS: SOY



CREATIVE CLASSIC FOODS INC  
A Great Spin On Taste

(516)255-0065  
3a North Park avenue, RVC, NY 11570



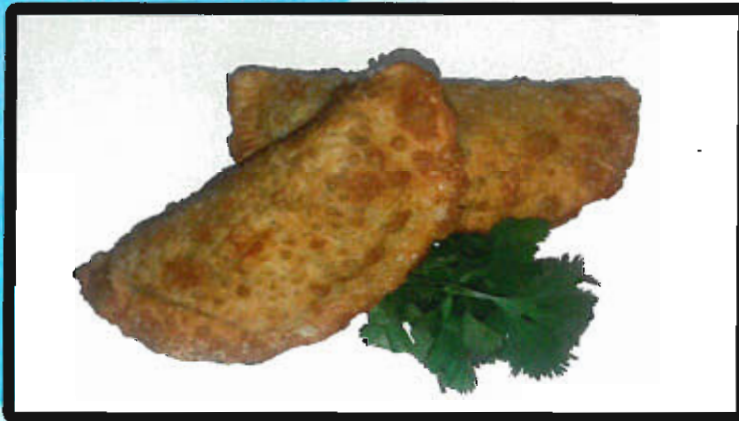
# Pork Tamali - Plant Based -

INGREDIENTS: WATER, SOY FLOUR (ISOLATED SOY PROTEIN TAPIOCA STARCH) BROWN SUGAR, WHITE DISTILLED VINEGAR, EXPELLER PRESSED CANOLA OIL, TOMATO PASTE, SEA SALT, YEAST EXTRACT (YEAST EXTRACT, NATURAL FLAVORING) DRIED GARLIC, DRIED ONION, CARAMEL COLOR, NATURAL LIQUID SMOKE FLAVOR, XANTHAN GUM, CHIPOTLE CHILE POWDER, GROUND CLOVES, CORN FLOUR, BELL PEPPERS, WHITE ONION, VEGETABLE STOCK (CARROT, CELERY, ONION) CORIANDER, ANNATO  
CONTAINS: SOY



# CREATIVE CLASSIC FOODS INC

## "CREATIVE EMPANADAS"



EMPANADAS, THE ORIGINAL TURNOVER HAS IT'S ORIGINS IN SPAIN AND WAS BROUGHT TO A VARIETY OF SOUTH & CENTRAL AMERICA AND CARRIBEAN ISLANDS DURING THE SPAIN CONQUEST.

WE TAKE THE ORIGINAL EMPANADA AND ADD OUR CREATIVE TOUCH ALL OUR EMPANADAS INCLUDE AN ARRAY OF FULLY COOKED FILLING WITH A CRUST OPTION OF FROZEN COOKED OR FROZEN UNCOOKED SHELL. OUR EMPANADAS ARE 4 OUNZE TOTAL WEIGHT.

### **SAVORY STYLE**

#### **LOBSTER-BROCCOLI & CHEDDAR EMPANADA**

LOBSTER MEAT, BROCCOLI FLORETS & SHREDDED VERMONT CHEDDAR IN A SAVORY SAUCE

#### **SEAFOOD & SWEET CORN EMPANADA**

SHRIMP & CRABMEAT WITH SWEET CREAMED CORN & QUESO.

#### **SHRIMP MOLE EMPANADA**

SHRIMP IN A MEXICAN BROWN MOLE.

(A PUEBLA BLEND OF DARK ROASTED CHILES, TREE NUTS, COFFE, HERBS & COCOA)

#### **VEGETABLE FAJITA EMPANADA**

SAUTEED SWEET BELL PEPPERS, WHITE ONIONS, FRESH GARLIC & FAJITA SEASONINGS.

#### **POTATO & QUESO EMPANADA**

CHEF'S BLEND OF CHIHUAHUA & JACK CHEESES WITH SWEET YUKON GOLD WHIPPED POTATO & HERBS.

#### **PAELLA**

LOBSTER, SHRIMP, SOFRITO, SAFFRON RICE, SWEET PEAS LESS THAN 2 % SPANISH CHORIZO.

#### **MAC -N- CHEESE**

AMERICAN FAVORITE, ELBOW MACARONI, SHARP CHEDDAR, PARMESAN CREAM.

#### **TROPICALE SHRIMP EMPANADA (SWEET & SAVORY)**

DICED SHRIMP, MANGO, RED BELL PEPPERS, TOASTED COCONUT IN A TROPICAL FRUIT BASE.

#### **RICE & VEGETABLE EMPANADA**

MEXICAN RED RICE, ASSORTED SEASONAL VEGETABLES & BLENDED JACK CHEESE.

# CREATIVE CLASSIC FOODS INC

"CREATIVE EMPANADAS"



LOBSTER-BROCCOLI  
& CHEDDAR EMPANADA  
UNCOOKED - CE 1001LBCU  
PARCOOKED - CE 1001LBCC



EGGPLANT PARMESEAN  
EMPANADA  
UNCOOKED - CE 1015EPU  
PARCOOKED - CE 1015EPC



SEAFOOD & SWEET CORN  
EMPANADA



CUBANO EMPANADA  
UNCOOKED - CE 1009PBCU  
PARCOOKED - CE 1009PBCC



SPINACH & GOAT CHEESE  
EMPANADA  
UNCOOKED - CE 1011SGU  
PARCOOKED - CE 1011SGC



SPINACH & CHEESE  
EMPANADA  
UNCOOKED - CE 1012SCU  
PARCOOKED - CE 1012SCC

# CREATIVE CLASSIC FOODS INC

## "CREATIVE EMPANADAS"



CUBAN RICE PUDDING  
EMPANADA

UNCOOKED - CE1021RPU  
PARCOOKED - 1021RPC



DULCE DE LECHE  
EMPANADA

UNCOOKED - CE1020DLU  
PARCOOKED - CE1020DLC



MAC-N-CHEESE EMPANADA

UNCOOKED - 1013MCU  
PARCOOKED - 1013MCC

# CREATIVE CLASSIC FOODS INC

"RICE BALLS"

(ARANCINI)

SWEET PEAS



2 OZ UNCOOKED.....1012RBPU  
2 OZ COOKED .....1012RBPC  
8 OZ UNCOOKED.....1018RBPU  
8 OZ COOKED.....1018RBPC

8 OZ PACKAGED



2 OZ PACKAGED



# CREATIVE CLASSIC FOODS INC

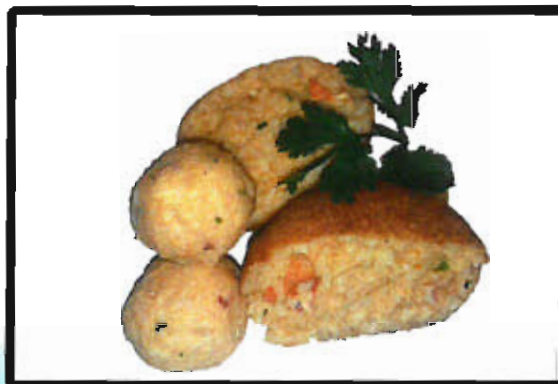
## "RICE BALLS" (ARANCINI)

### MUSHROOM & SPINACH



2 OZ UNCOOKED.....1022RBSMU  
2 OZ COOKED .....1022RBSMC  
8 OZ UNCOOKED.....1028RBSMU  
8 OZ COOKED.....1028RBSMC

### PAELLA



2 OZ UNCOOKED.....1032RBPU  
2 OZ COOKED .....1032RBPC  
8 OZ UNCOOKED.....1038RBPU  
8 OZ COOKED.....1038RBPC

# REPACK LABELS



**Cabo**  
A Taste of Mexico

**Paella RICE BALLS**  
Seafood & Rice

Heating Instructions | OVEN- preheat oven to 325° & heat for 10 minutes or to 165°  
MICROWAVE- 1 minute on high or to 165°

**Nutrition Facts** Serv. size: **1 piece, 8oz**

Amount per serving: **Calories 370, Total Fat 5g (8% DV), Sat. Fat 2.5g (13% DV),**  
**Trans Fat 0g, Cholest. 70mg (23% DV), Sodium 780mg (33% DV), Total Carb. 64g (21% DV),**  
**Dietary Fiber 2g (8% DV), Sugars 2g, Protein 14g, Vit. A (8% DV), Vit. C (10% DV), Calcium 10%,**  
**Iron 10%.**

Ingredients: Arborio Rice, Water, Rice, Shrimp, White Bread (Enriched Wheat Flour (Flour, Malted Barley Flour, Niacin, Iron (Ferrous Sulfate, Reduced Iron), Thiamine Mononitrate, Riboflavin, Folic Acid), Water, Yeast, Salt, Soybean Oil, Sugar, Malt, Dough Conditioners (Ascorbic Acid, Calcium Sulfate, Sodium Stearoyl Lactylate), Calcium Propionate (Preservative)), Mozzarella (Cultured Milk, Vinegar, Microbial Rennet, Salt, White Wine, Egg, Peas, Unenriched Flour (Wheat Flour, Malted Barley Flour), Less Than 2% Of: Parmesan (Milk, Cheese Cultures, Salt, Enzymes), Salt, Black Pepper, Garlic. **CONTAINS: EGG, WHEAT, SOY, SHRIMP**

sales@ccfoodsinc.com • © Copyright 2019 CC Foods, Inc. **8oz (226.8g)**



**Cabo**  
A Taste of Mexico

**Classic RICE BALLS**

Heating Instructions | OVEN- preheat oven to 325° & heat for 10 minutes or to 165°  
MICROWAVE- 1 minute on high or to 165°

**Nutrition Facts** Serv. size: **1 piece, 8oz**

Amount per serving: **Calories 410, Total Fat 6g (9% DV), Sat. Fat 2.5g (13% DV),**  
**Trans Fat 0g, Cholest. 55mg (18% DV), Sodium 520mg (22% DV), Total Carb. 73g (24% DV),**  
**Dietary Fiber 3g (12% DV), Sugars 2g, Protein 13g, Vit. A (6% DV), Vit. C (2% DV), Calcium 15%,**  
**Iron 10%.**

Ingredients: Arborio Rice, Water, Rice, White Bread (Enriched Wheat Flour (Flour, Malted Barley Flour, Niacin, Iron (Ferrous Sulfate, Reduced Iron), Thiamine Mononitrate, Riboflavin, Folic Acid), Water, Yeast, Salt, Soybean Oil, Sugar, Malt, Dough Conditioners (Ascorbic Acid, Calcium Sulfate, Sodium Stearoyl Lactylate), Calcium Propionate (Preservative)), Mozzarella (Cultured Milk, Vinegar, Microbial Rennet, Salt, White Wine, Egg, Peas, Unenriched Flour (Wheat Flour, Malted Barley Flour), Less Than 2% Of: Parmesan (Milk, Cheese Cultures, Salt, Enzymes), Salt, Black Pepper, Garlic. **CONTAINS: EGG, WHEAT, SOY**

sales@ccfoodsinc.com • © Copyright 2019 CC Foods, Inc. **8oz (226.8g)**



**Cabo**  
A Taste of Mexico

**Lobster RICE BALLS**  
Lobster & Rice

Heating Instructions | OVEN- preheat oven to 325° & heat for 10 minutes or to 165°  
MICROWAVE- 1 minute on high or to 165°

**Nutrition Facts** Serv. size: **1 piece, 8oz**

Amount per serving: **Calories 370, Total Fat 5g (8% DV), Sat. Fat 2.5g (13% DV),**  
**Trans Fat 0g, Cholest. 55mg (18% DV), Sodium 560mg (23% DV), Total Carb. 64g (21% DV),**  
**Dietary Fiber 2g (8% DV), Sugars 2g, Protein 13g, Vit. A (8% DV), Vit. C (10% DV), Calcium 10%,**  
**Iron 10%.**

Ingredients: Arborio Rice, Water, Rice, Lobster Meat, White Bread (Enriched Wheat Flour (Flour, Malted Barley Flour, Niacin, Iron (Ferrous Sulfate, Reduced Iron), Thiamine Mononitrate, Riboflavin, Folic Acid), Water, Yeast, Salt, Soybean Oil, Sugar, Malt, Dough Conditioners (Ascorbic Acid, Calcium Sulfate, Sodium Stearoyl Lactylate), Calcium Propionate (Preservative)), Mozzarella (Cultured Milk, Vinegar, Microbial Rennet, Salt, White Wine, Egg, Peas, Unenriched Flour (Wheat Flour, Malted Barley Flour), Less Than 2% Of: Parmesan (Milk, Cheese Cultures, Salt, Enzymes), Salt, Black Pepper, Garlic. **CONTAINS: EGG, WHEAT, SOY, LOBSTER, SHRIMP**

sales@ccfoodsinc.com • © Copyright 2019 CC Foods, Inc. **8oz (226.8g)**



**Cabo**  
A Taste of Mexico

**Paella EMPANADA**  
Seafood & Rice

Heating Instructions | OVEN- preheat oven to 325° & heat for 10 minutes or to 165°  
MICROWAVE- 1 minute on high or to 165°

**Nutrition Facts** Serv. size: **1 piece, 4oz**

Amount per serving: **Calories 250, Total Fat 8g (12% DV), Sat. Fat 2g (10% DV),**  
**Trans Fat 0g, Cholest. 20mg (7% DV), Sodium 500mg (21% DV), Total Carb. 33g (11% DV),**  
**Dietary Fiber <1g (2% DV), Sugars 2g, Protein 10g, Vit. A (0% DV), Vit. C (82% DV), Calcium 2%,**  
**Iron 10%.**

Ingredients: Empanada Dough, Rice, Sauce, Shrimp, Saffron, Cilantro, Red and Green Bell Pepper, White Onion, Garlic, Soy Oil, Salt, Pepper. **CONTAINS: WHEAT, SOY, SHRIMP**

sales@ccfoodsinc.com • © Copyright 2019 CC Foods, Inc. **4oz (113.4g)**

# CREATIVE CLASSIC FOODS INC

## "CLASSIC SALSAS"



MS1002C8 - MANGO SALSA 8 OUNCE  
MS1002C12 - MANGO SALSA 12 OUNCE  
MS1002C16 - MANGO SALSA 16 OUNCE  
MS1002C32 - MANGO SALSA 32 OUNCE

GM1003C8 - GUACAMOLE 8 OUNCE  
GM1003C16 - GUACAMOLE 16 OUNCE  
GM1003C32 - GUACAMOLE 32 OUNCE

PD1004C8 - PICO DE GALLO 8 OUNCE  
PD1004C16 - PICO DE GALLO 16 OUNCE  
PD1004C32 - PICO DE GALLO 32 OUNCE

SQ1005C8 - SALSA QUESO 8 OUNCE  
SQ1005C16 - SALSA QUESO 16 OUNCE  
SQ1005C32 - SALSA QUESO 32 OUNCE

CC1006C8 - CHIMICHURRI 8 OUNCE  
SQ1006C16 - CHIMICHURRI 16 OUNCE  
SQ1006C32 - CHIMICHURRI 32 OUNCE



SF1001C5LB - SALSA FRESCO 5 LB  
SF1001C30LB - SALSA FRESCO 30 LB  
MS1005C5LB - MANGO SALSA 5 LB  
MS1005C30LB - MANGO SALSA 30 LB  
PD1004C5LB - PICO DE GALLO 5 LB  
PD1004C30LB - PICO DE GALLO 30 LB  
SQ1005C5LB - SALSA QUESO 5LB  
SQ1005C30LB - SALSA QUESO 30 LB





# CREATIVE CLASSIC FOODS INC

A Great Spin On Taste

## “CLASSIC RICE DISHES”



- CCF-5001-WR6 CLASSIC WHITE RICE 6 LB
- CCF-5002-FR6 CLASSIC FRIED RICE 6 LB
- CCF-5003-VFR CLASSIC VEGETABLE FRIED RICE 6 LB
- CCF-5004-SR CLASSIC SPANISH RICE 6 LB
- CCF-5005-SRP CLASSIC SAFFRON RICE PILAF 6 LB
- CCF-5006-ORP CLASSIC ORZO RICE PILAF 6 LB
- CCF-5007-MRR CLASSIC MEXICAN RED RICE 6 LB



# CREATIVE CLASSIC FOODS INC

A Great Spin On Taste

## “CREATIVE SALADS”



**ASIAN SESAME NOODLE  
SALAD**  
HOI SIN SAUCE  
CCS-0201-ASN



**BROCCOLI CRUNCH  
SLAW**  
CCS-0101-BCS



**MEDITERRANEAN  
COUS COUS CHICK PEA  
SALAD**  
LEMON VINAIGRETTE  
CCS-5001-MCPS



**BARLEY MUSHROOM  
SALAD**  
WHITE BALSAMIC DRESSING  
CCS-2001-BMS



**QUINOA SALAD**  
RED WINE VINAIGRETTE  
CCS-0301-QS



**RED QUINOA AND  
BABY SPINACH**  
RED WINE VINAIGRETTE  
CCS-6002-RQBS



# CREATIVE CLASSIC FOODS INC

A Great Spin On Taste

## “CREATIVE SALADS”



**ASIAN SESAME LOMEIN  
SALAD**  
HOI SIN DRESSING  
CCS-1001-ASL



**SOUTHWEST KALE  
SALAD**  
CCS-0001-SWK



**SPICY 3 BEAN  
SALAD**  
WHITE BALSAMIC VINAIGRETTE  
CCS-7001-3B



**SUPER FOODS  
SALAD**  
RASPBERRY VINAIGRETTE  
CCS-0401-SF



**TRI COLOR QUINOA SPINACH  
SALAD**  
LEMON VINAIGRETTE  
CCS-9001-TCQS

# REPACK LABELS

## MEDITERRANEAN COUSCOUS & CHICK PEA

**Ingredients:** Pearl Couscous, Garbanzo Beans (Cooked Dry Chick Peas, Water, Salt, Disodium Edta (To Preserve Color) Bell Pepper, Lemon Vinaigrette (Lemon Juice, White Pepper, Garlic Powder, Salt, Onion Powder, Soy Oil, Microgard (Cultured Dextrose)

Use by date:

## SOUTHWEST KALE SALAD

**Ingredients:** Black Beans (Water, Salt, Calcium Chloride, Ferrous Gluconate) Corn Kernels, Bell Peppers, Kale Greens, Garlic, Lime Juice (Water, Lime Juice Concentrate 1/5 Of 1% Sodium Benzoate And 1/25 Of 1% Sodium Bisulfite (Preservatives) And Lime Oil.), Jalapeno, Soy Oil, Microgard (Cultured Dextrose, Maltodextrin (Carrier)

Use by date:

## SPICY 3 BEAN

**Ingredients:** Black Beans (Water, Salt, Calcium Chloride, Ferrous Gluconate) Navy Beans Water (Salt, calcium Chloride), Red Kidney Beans (Water, Salt, Calcium Chloride, Disodium EDTA To Preserve Color) Diced Jalapeno Pepper, Green Onion, Garlic , Bell Pepper, White Balsamic Vinaigrette, Garlic Powder, White Pepper, Salt, Soy Oil, Microgard 730 (Cultured Dextrose)

Contains: Soy

## BROCCOLI CRUNCH SALAD

**Ingredients:** Broccoli, Carrot, White Onion, sundried Cranberry (Sugar, Citric Acid, Sunflower Oil, Elderberry concentrate For Color) , Mayonaise(Soy Oil, Water, Egg Yolk, Egg.sugar, Salt, Spices,citric acid, Lemon Juice Concentrate, Calcium Disodium Citrate, White Vinegar, Lemon Juice, onion Powder, Garlic Salt

Contains: Egg

Use by date:

## TRI COLOR QUINOA & SPINACH

**Ingredients:** White Quinoa, Red Quinoa, Corn Kernels, Green Onion, Baby Spinach, Feta Cheese (Pasteurized Whole Milk, Skim Milk, Cream, Whey, Salt, Cultures, Enzymes, Powdered Cellulose, Potassium Sorbate, Guar Gum, Xanthan Gum, Natamycin (A Natural Mold Inhibitor) , Lemon Vinaigrette (Lemon Juice, White Pepper, Garlic Powder, Salt, Onion Powder, Soy Oil (Pure Soybean Oil), Microgard Cultured Dextrose)

Contains: Milk, Soy

Use by date:

## RED QUINOA & BABY SPINACH

**Ingredients:** Red Quinoa, Dried Cranberries, Kale Greens, White Onion, Green Onion, Red Wine Vinaigrette (Distilled Red Vinegar, White Pepper, Garlic Powder, Salt, Onion Powder, Soy Oil, Microguard (Cultured Dextrose)

Use by date:

## ASIAN SESAME NOODLE

**Ingredients:** Spaghetti (Durum Wheat Semolina, Vitamin iron Ferrous Lactate, Niacin, Thiamine Mononitrate, Riboflavin, Folic Acid), Water Chestnuts (Water, Citric Acid), Green Onion, Red Bell Peppers, Sesame Seeds, Hoise Sin Dressing (Sugar, Water, Soy Beans, Salt, Sweet Potato, Modified Corn Starch, Wheat Flour, Chili Peppers, Spices, Caramel Color, Acetic Acid, FD&C Red Color No.40,) Garlic, Sesame Oil, Rice vinegar (Rice Wine, Diluted With Water to 45% Acidity), Microgard (Cultured Dextrose)

## MUSHROOM BARLEY SALAD

**Ingredients:** Egg Barley (Pearl), Mushrooms, Red Bell Pepper, Green Onion, Celantro, White Balsamic Vinaigrette (Baisamic Vinegar, Garlic Powder, White Pepper, Salt, Soy Oil),- Microgard (Cultured Dextrose, Maltodextrin (Carrier)

Contains: Soy

Use by date:

# CREATIVE CLASSIC FOODS INC

“CREATIVE GRAB & GO”



TOSTONES NACHOS  
TN1007CBP



STUFFED MUSHROOMS  
SM1010MFGP



BEAN BURRITO  
BB1008CBP



FRIED PLANTAINS & SALSA  
PCS1011CBP



EMPANADA  
BROCCOLI & CHEDDAR  
EBC1009BCP



FRIED PLANTAINS & GUACAMOLE  
PCG1011CBP



**CREATIVE CLASSIC FOODS INC**

A Great Spin On Taste

# **CATALOG WHOLESALE PRICING**



THE ORIGINAL PLANT BASED EMPANADA

GMO FREE \* VEGAN

PROFILE	SIZE	PROCESS	PC PRICE/LB PRICE	CASE	ITEM CODE
BEEF FLAVOR	4 oz.	UNCOOKED SHELL	\$1.45 / \$5.80	24 PER \$34.80	CC-EMP-BEEF-020u
BEEF FLAVOR	4 oz.	COOKED SHELL	\$1.48 / \$5.92	24 PER \$35.52	CC-EMP-BEEF-020c
CHICKEN FLAVOR	4 oz.	UNCOOKED SHELL	\$1.45 / \$5.80	24 PER \$34.80	CC-EMP-CHX-021u
CHICKEN FLAVOR	4 oz.	COOKED SHELL	\$1.48 / \$5.92	24 PER \$35.52	CC-EMP-CHX-021c
PORK FLAVOR	4 oz.	UNCOOKED SHELL	\$1.45 / \$5.80	24 PER \$34.80	CC-EMP-PRK-022u
PORK FLAVOR	4 oz.	COOKED SHELL	\$1.48 / \$5.92	24 PER \$35.52	CC-EMP-PRK-022c
CHORIZO FLAVOR	4 oz.	UNCOOKED SHELL	\$1.45 / \$5.80	24 PER \$34.80	CC-EMP-CHRZ-023u
CHORIZO FLAVOR	4 oz.	COOKED SHELL	\$1.45 / \$5.92	24 PER \$35.52	CC-EMP-CHRZ-023c

EMPLANTNADA IS A PROPRIETARY TRADE MARK OF CREATIVE CLASSIC FOODS INC.



3A North Park avenue, Rockville Centre, NY 11570 516-255-1999 sales@ccfoodsinc.com

# EMPANADAS

STYLE	SIZE	PROCES	PC PRICE/LB PRICE	CASE	ITEM CODE
CHICKEN	4 oz	UNCOOKED	\$1.10 /\$4.40	24 CT \$26.40	CE10014U
CHICKEN	4 oz	PARCOOKED	\$1.15 / \$4.60	24 CT \$27.60	CE10014C
BEEF	4 oz	UNCOOKED	\$1.15 / \$4.60	24 CT \$27.60	BE10024U
BEEF	4 oz	PARCOOKED	\$1.20 / \$4.80	24 CT \$28.80	BE10024C
LOBSTER-BROCCOLI & CHEDDAR	4 oz	UNCOOKED	\$1.90 / \$7.60	24 CT \$46.80	LBE10034U
LOBSTER-BROCCOLI & CHEDDAR	4 oz	PARCOOKED	\$1.95/\$7.80	24 CT \$45.60	LBE10034C
VEG FAJITA	4 oz	UNCOOKED	\$.85 /\$3.40	24 CT \$20.40	VFE10044U
VEG FAJITA	4 oz	PARCOOKED	\$.90/ \$3.60	24 CT \$21.60	VFE10044C
POTATO & QUESO	4 oz	UNCOOKED	\$.85/ \$3.40	24 CT \$20.40	PQE10054U
POTATO & QUESO	4 oz	PARCOOKED	\$.90/ \$3.60	24 CT \$21.60	PQE10054C
PAELLA	4 oz	UNCOOKED	\$1.35/ \$5.40	24 CT \$32.40	PE10064U
PAELLA	4 oz	PARCOOKED	\$1.40/\$5.60	24 CT \$39.60	PE10064C
SPINACH & MUSHROOM	4 oz	UNCOOKED	\$.90/\$3.60	24 CT \$21.60	SME10074U
SPINACH & MUSHROOM	4 oz	PARCOOKED	\$.95/\$3.80	24 CT \$22.80	SME10074C
SPINACH & CHEESE	4 oz	UNCOOKED	\$.90/\$3.60	24 CT \$21.60	SCE10084U
SPINACH & CHEESE	4 oz	PARCOOKED	\$.95/\$3.80	24 CT \$22.80	SCE10084C



SHRIMP TROPICALE	4 OZ	PARCOOKED	\$1.90/\$7.60	24 CT \$45.60		
TROPICALE	4 OZ	UNCOOKED	\$1.05/\$4.60	24 CT \$25.20		
TROPICALE	4 OZ	PARCOOKED	\$1.10/\$4.40	24 CT \$26.40		
RICE & VEG	4 OZ	UNCOOKED	\$1.05/\$4.20	24 CT \$25.20		
RICE & VEG	4 OZ	PARCOOKED	\$1.10/\$4.40	24 CT \$26.40		
CUBAN-PLANTAIN, BLACKBEAN & CORN	4 OZ	UNCOOKED	\$1.15/\$4.60	24 CT \$27.60		
CUBAN-PLANTAIN, BLACKBEAN & CORN	4 OZ	PARCOOKED	\$1.20/\$4.80	24 CT \$28.80		
SPINACH & MUSHROOM	4 OZ	UNCOOKED	\$ .90/\$3.60	24 CT \$21.60		
SPINACH & MUSHROOM	4 OZ	PARCOOKED	\$ .95/\$3.80	24 CT \$22.80		
SPINACH & GOAT CHEESE	4 OZ	UNCOOKED	\$1.25/\$5.00	24 CT \$30.00		
SPINACH & GOAT CHEESE	4 OZ	PARCOOKED	\$1.30/\$5.20	24 CT \$31.20		
SPINACH & CHEESE	4 OZ	UNCOOKED	\$ .80/\$3.20	24 CT \$19.20		
SPINACH & CHEESE	4 OZ	PARCOOKED	\$ .85/\$3.40	24 CT \$19.20		
MAC & CHEESE	4 OZ	UNCOOKED	\$ .80/\$3.20	24 CT \$19.20		
MAC & CHEESE	4 OZ	COOKED	\$ .80/\$3.20	24 CT \$19.20		
SOUTHWEST	4 OZ	UNCOOKED	\$ .85/\$3.40	24 CT \$20.40		
SOUTHWEST	4 OZ	PARCOOKED	\$ .90/\$3.60	24 CT \$21.60		
EGGPLANT PARM	4 OZ	UNCOOKED	\$1.30/\$5.20	24 CT \$31.20		
EGGPLANT PARM	4 OZ	PARCOOKED	\$1.35/\$5.40	24 CT \$32.40		
BANANA NUTELLA	4 OZ	UNCOOKED	\$1.30/\$5.20	24 CT \$31.20		
BANANA NUTELLA	4 OZ	PARCOOKED	\$1.35/\$5.40	24 CT \$32.40		
BANANA	4 OZ	UNCOOKED	\$ .85/\$3.40	24 CT \$20.40		
BANANA	4 OZ	PARCOOKED	\$ .90/\$3.60	24 CT \$21.60		





# CREATIVE CLASSIC FOODS INC

A Great Spin On Taste

FIRST RECEIVER PRICING

## RICE BALLS

### CLASSIC SWEET PEAS

SIZE	PROCESS	PC PRICE/LB PRICE	CASE	ITEM CODE
2 oz	UNCOOKED	\$ .48 / \$3.84	48 per \$23.04/6lb	1001RB2SPU
2 oz	COOKED	\$ .50 / \$4.00	48 per \$24.00/6lb	1001RB2SPC
8 oz	UNCOOKED	\$ 1.40 / \$2.80	12 per \$16.80/6lb	1001RB8SPU
8 oz	COOKED	\$ 1.43 / \$2.86	12 per \$17.16/6lb	1001RB8SPC

**RICE BALLS**

FIRST RECEIVER PRICING

**MUSHROOMS & SPINACH**

<u>SIZE</u>	<u>PROCESS</u>	<u>PC PRICE/LB PRICE</u>	<u>CASE</u>	<u>ITEM CODE</u>
2 oz	UNCOOKED	\$ .48 / \$3.84	48 per \$23.04/6lb	1001RB2MSU
2 oz	COOKED	\$ .50 / \$4.00	48 per \$24.00/6lb	1001RB2MSC
8 oz	UNCOOKED	\$ 1.40 / \$2.80	12 per \$16.80/6lb	1001RB8MSU
8 oz	COOKED	\$ 1.43 / \$2.86	12 per \$17.16/6lb	1001RB8MSC

**LOBSTER**

8 oz	UNCOOKED	\$ 1.64 / \$3.28	12 per \$19.68/6lb	10038RB LU
8 oz	COOKED	\$ 1.67 / \$4.34	12 per \$20.04/6lb	10038RB LC



a Creative Classic Foods plant based line

NEW CLASSIC DEVELOPMENTS

ITEM	UNIT SIZE	PC/LB PRICE	PACK SIZE	DIST CASE PRICE - CODE #	SUGG. RESALE
CHICKEN POT PIE PLANT BASED	8.5 ounces	\$3.81 per piece/\$7.20 per lb	6 per case	\$21.36 TB1002PP	\$22.86 (\$1.50)
CHICKEN POT PIE PB-G & G PKG	8.5 ounces	\$4.16 per piece/\$7.84 per lb	6 per case	\$23.56 TB1002PPGG	\$24.96 (\$1.40)
CHILI con CARNE PLANT BASED	16 ounces	\$4.85 per piece/\$4.75 per lb	6 per case	\$27.64 TB1004CCGG	\$29.10 (\$1.46)
CHILI con CARNE PLANT BASED	5 LB	\$23.75 per piece/\$4.75 per lb	2 per case	\$45.12 TB1004CC5	\$47.50 (\$2.38)
BOLOGNESE SAUCE PB	16 ounces	\$5.05 per piece/\$4.99 per lb	6 per case	\$28.78 TB1003BBGG	\$30.30 (\$1.52)
BOLOGNESE SAUCE PB	5 LB	\$24.95 per piece/\$4.99 per lb	2 per case	\$47.40 TB1003BB5	\$49.90 (\$2.50)
CHORIZO RICE BALLS PB	4 oz per	\$1.10 per piece/\$4.40 per lb	24 per case	\$25.08 TB1004RB	\$26.40 (\$1.32)
EGGPLANT BALLS food service	10 lb cs/80pc	\$0.76 per piece/\$6.75 lb	4 tray/20 pc tray 80 piece case	\$ TB1006EB	\$60.75
EGGPLANT BALLS RETAIL PACK	10 bags/ 6/2oz per	\$0.90 per piece/\$6.75 lb	10 bags/6 per bag	\$ TB1006EBGG	\$54.00
PORK TAMALE PB	11 oz.	\$3.25 per piece/\$4.80 LB	16 per case	\$49.40 TB1007PT	\$52.00 (\$2.60)
PORK TAMALE PB GRAB & GO PKG	11 oz.	\$3.50 per piece/\$5.12 per lb	16 per case	\$53.20 TB1007PTGG	\$56.00 (\$2.80)
CHICKEN SALAD PB		<b>IN DEVELOPMENT</b>			

NEW CLASSIC DEVELOPMENTS {NOT PLANT BASED}					
CRAB CAKE	4 oz. per	\$2.05 per piece/\$8.20 lb	24 per case	\$49.20 TB1005CC	\$51.66 (\$2.46)

tel: 516-255-1999    [www.cctfoodsinc.com](http://www.cctfoodsinc.com)    sales@cctfoodsinc.com    3A north park avenue, Rockville Centre, NY 11570



## CREATIVE CLASSIC FOODS INC

A Great Spin On Taste

### SPECIALTY SALADS

ITEM	ITEM CODE	PER LB	5LBS	10LBS
ASIAN SESAME LOMEIN	CCS-1001-ASL	\$3.10	\$15.50	\$31.00
ASIAN SESAME NOODLE	CCS-1002-ASN	\$3.10	\$15.50	\$31.00
BARLEY MUSHROOM SALAD	CCS-2001-BMS	\$3.22	\$16.10	\$32.20
CHICK PEA SALAD	CCS-3001-CPS	\$2.97	\$14.85	\$29.70
EGG SALAD	CCS-4001-ES	\$1.28	\$6.40	\$12.80
MEDITERRANEAN COUS COUS CHICK PEA SALAD	CCS-5001-M3PS	\$2.85	\$14.25	\$28.50
QUINOLA SALAD	CCS-6001-QS	\$3.05	\$15.25	\$30.50
RED QUINOA & BABY SPINACH	CCS-6002-RQBS	\$3.24	\$16.20	\$32.40
SPICY 3 BEAN SALAD	CCS-7001-3B	\$2.81	\$14.05	\$28.10
SUPER FOOD SALAD	CCS-8001-SFS	\$4.25	\$21.25	\$41.50
TRI COLOR QUINOA SPINACH	CCS-9001-TCQS	\$3.40	\$17.00	\$34.00
SOUTH WEST KALE	CCS-0001-SWK	\$3.85	\$19.25	\$38.50